

IL CASTELLO DELLE NOTE

bisia

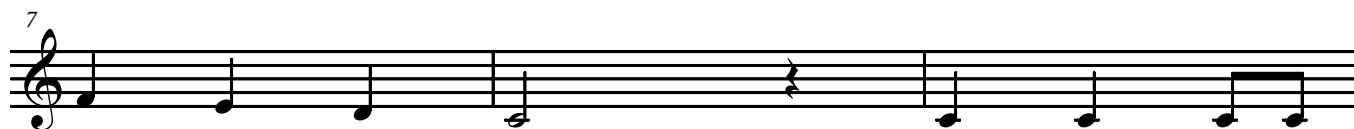
Flauto



Den - tro/un ca - stel - lo le no - te ci



stan ed og - gi noi le vo -



glia - mo/im - pa - rar! DO DO don - do -



lò; RE RE an - cor re - gnò; MI MI mia - go - lò;



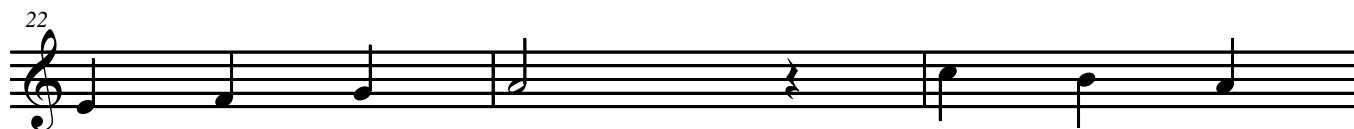
FA FA sfar - fal - lò; SOL SOL il sol bril - lò; LA



LA la - vo - rò; SI SI si - bi - lò; DO DO



dor - mi - rò. Ed o - ra so co - me



fa - re/a suo - nar e nel ca -

bisia

25

stel - lo po - trò anch'io abi - tar!

The image shows a single line of musical notation on a five-line staff. The notation begins with a treble clef and a common time signature. The melody consists of seven notes: a quarter note on G4, a quarter note on A4, a quarter note on B4, a quarter note on C5, a quarter note on B4, a quarter note on A4, and a dotted quarter note on G4. The notes are aligned with the lyrics 'stel - lo po - trò anch'io abi - tar!' written below the staff. The staff ends with a double bar line.