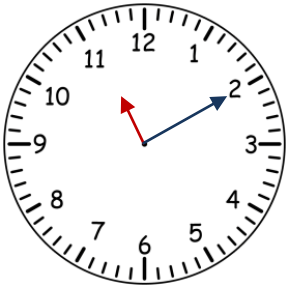


# CHE ORE SONO?

1. Scrivi le ore e i minuti indicati dagli orologi analogici come nell'esempio.

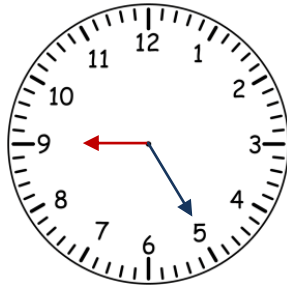


antimeridiane

11:10

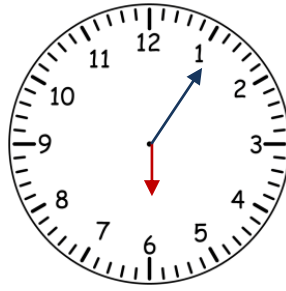
23:10

pomeridiane



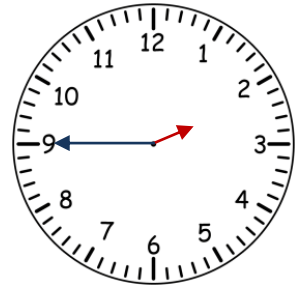
antimeridiane

pomeridiane



antimeridiane

pomeridiane



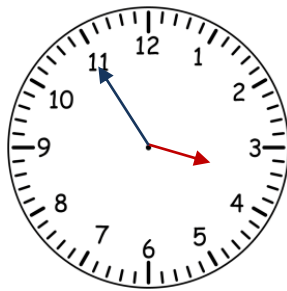
antimeridiane

pomeridiane



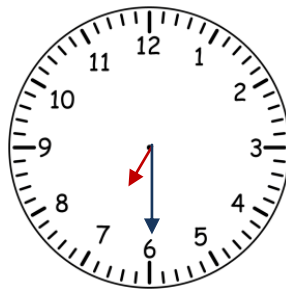
antimeridiane

pomeridiane



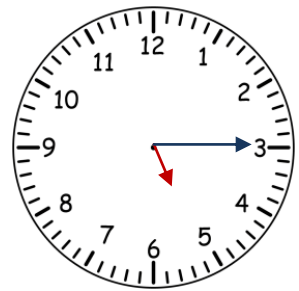
antimeridiane

pomeridiane



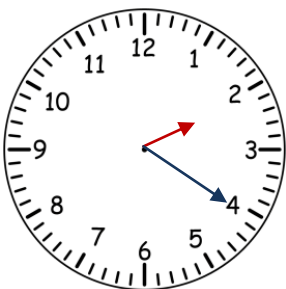
antimeridiane

pomeridiane



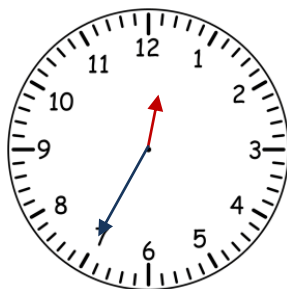
antimeridiane

pomeridiane



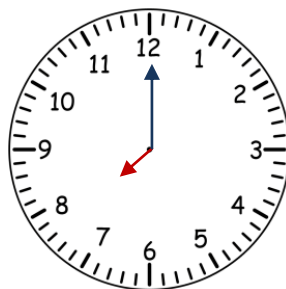
antimeridiane

pomeridiane



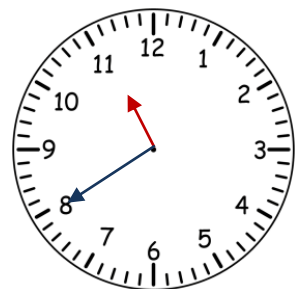
antimeridiane

pomeridiane



antimeridiane

pomeridiane



antimeridiane

pomeridiane